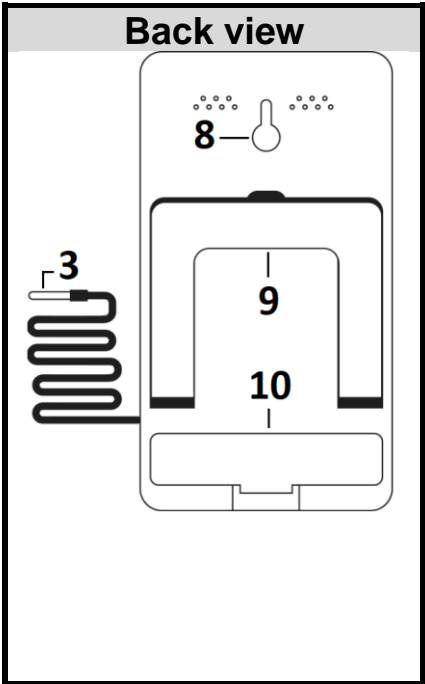
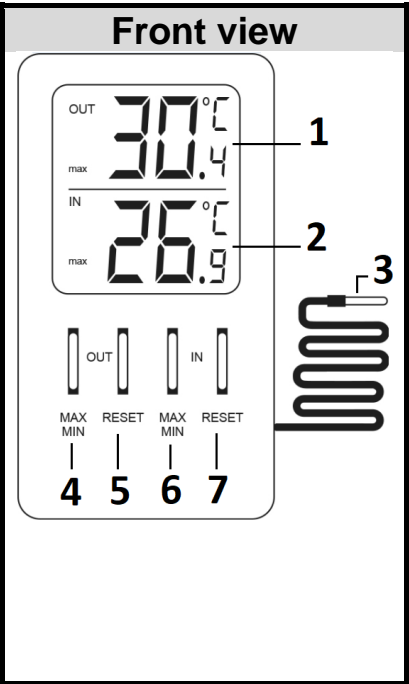


PLEASE READ THE INSTRUCTIONS MANUAL BEFORE YOUR FIRST USE. KEEP IT SAFE FOR FUTURE REFERENCE!

FEATURES

- Min/ Max temperature records
- Indoor temperature : -10°C +50°C
- Outdoor temperature : -50°C +70°C
- Accuracy : +/- 1.0°C
- Resolution : 0.1°C

PRODUCT DESCRIPTION

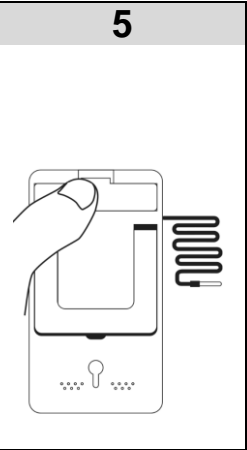
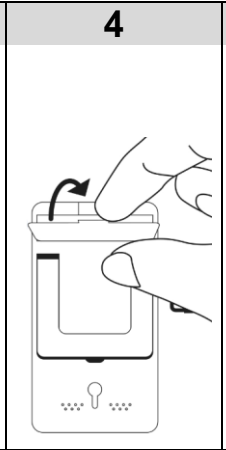
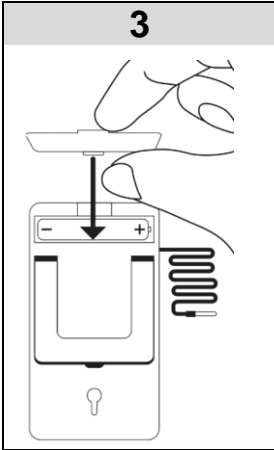
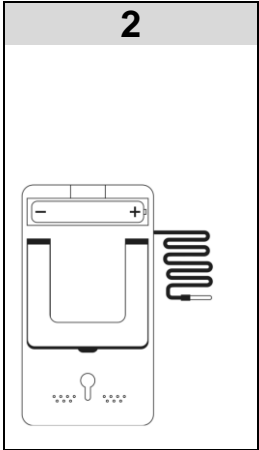


1. Outdoor temperature
2. Indoor temperature
3. Probe
4. Button to toggle between current, Maximum and Minimum outdoor temperature
5. Button to reset memory of outdoor temperature
6. Button to toggle between current, Maximum and Minimum indoor temperature
7. Button to reset memory of indoor temperature
8. Hook to hang the thermometer
9. Stand
10. Battery compartment

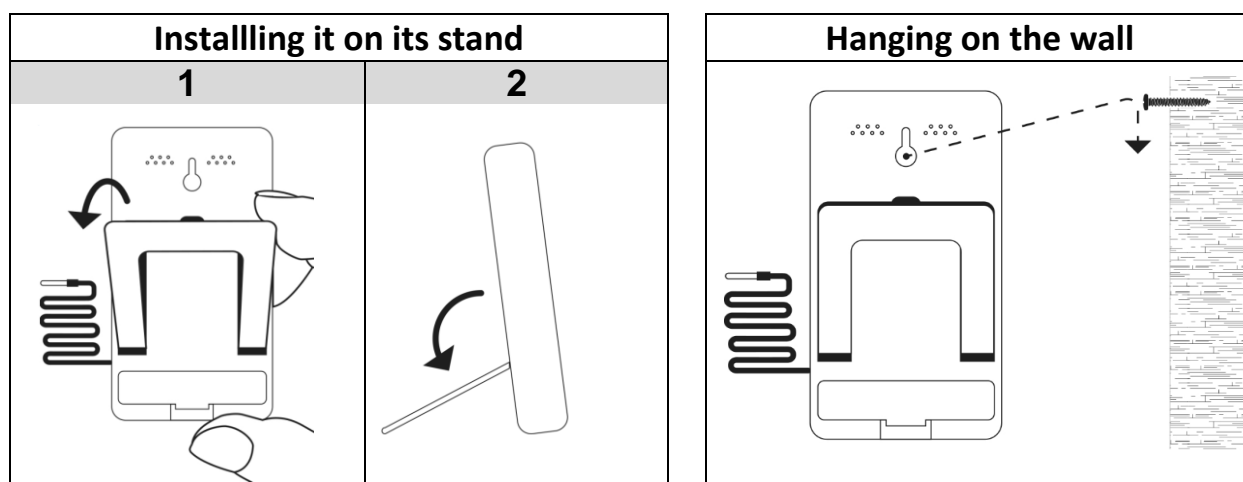
Before using: Remove the protective films on the panel and LCD screen. Then proceed as below to install the battery.

BATTERY INSTALLATION

Battery required: 1x 1.5V AA (not included)



INSTALLATION



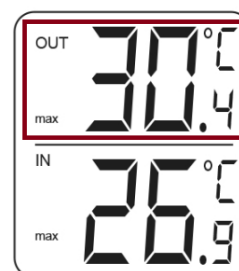
OPERATION

After connecting the battery, install the probe outside, and wait for about 30 minutes to allow the device to display the current temperatures for **outside** ("OUT") and **inside** ("IN").

OUTSIDE MIN/ MAX RECORDS

1. Press "**MIN/ MAX – OUT**" button once to display the maximum value recorded for outside temperature. The inscription "**MAX**" displays.
2. Press "**MIN/MAX – OUT**" again to display the minimum value recorded for outside. "**MIN**" displays.
3. Press once more to return to current outside temperature.

Note: Press "**RESET-OUT**" to erase the memory of minimum and maximum temperature recorded for outside. After reset, if you press "**MIN/MAX - OUT**", The outside max and min record will be the same as outside current temperature.

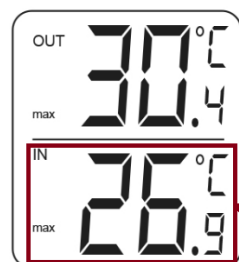


Outside temperature

INSIDE MIN/ MAX RECORDS

1. Press "**MIN/ MAX – IN**" button once to display the maximum value recorded for inside temperature. The inscription "**MAX**" displays.
2. Press "**MIN/MAX – IN**" again to display the minimum temperature recorded for inside. "**MIN**" displays.
3. Press once more to return to current temperature for inside.

Note: Press "**RESET-IN**" to erase the memory of minimum and maximum temperature recorded for inside. Note: After reset, if you press "**MIN/MAX - IN**", The inside max and min record will be the same as inside current temperature.



Inside temperature

WARNINGS

- Remove the battery if you plan not to use the product for a long period.
- Keep away from sources of heat, direct sunlight, humidity, water or other liquids.
- Do not immerse in water.
- Do not subject it to strong impacts and do not throw it.
- Do not drop, short-circuit, modify, disassemble or puncture it.

- It is not a toy. Keep out of reach of children.
- Do not try to repair the device. **All the repairs must be made by a qualified technician.**
- The outside temperature corresponds to the temperature recorded at the place where the probe is installed and can therefore vary quite quickly depending on local conditions: if the probe is indeed installed in a warm place (south facade of a house for example), the temperature will rise accordingly during the hottest hours of the day. On the contrary, if the probe is installed in a more temperate place (north facade of a house for example), the temperature recorded and displayed will be lower.

SAFE INSTRUCTIONS FOR BATTERY

- Never mix alkaline, standard (carbon-zinc) and rechargeable (nickel hydride).
 - Do not mix new and used batteries.
 - Do not attempt to recharge non-rechargeable batteries.
 - Remove rechargeable batteries from the device (if possible) before charging them.
 - Rechargeable batteries must always be recharged under adult supervision.
 - Remove used batteries.
 - Never short the power supply terminals.
 - Always use the recommended or equivalent battery types.
 - Always pay attention to battery polarity.
- Batteries must not be disposed of with household waste but must be returned to battery collection points.



CLEANING AND MAINTENANCE

- **DO NOT IMMERSE IN WATER OR ANY OTHER LIQUID.**
- **DO NOT USE ABRASIVES OR CLEANERS.**

- Clean only with a dry cloth.
- It is important that no liquid reaches the inside of the unit.



WARNING: You should not dispose of this device with your household waste. A selective collection system for this type of product is implemented by your local authorities. Please contact your local authorities to find out how and where collection takes place. These restrictions apply because electrical and electronic devices contain dangerous substances that have harmful effects on the environment or on human health and must be recycled.



Imported by EML/ Trading name: Prodis 1 rue de Rome 93110 Rosny-sous-Bois-France/ Made in PRC

Marketed by EUROTOPS VERSAND GMBH D-40764 LANGENFELD