

NATURE'S ANSWER TO BREATHING EASIER

# INHALO DSI™

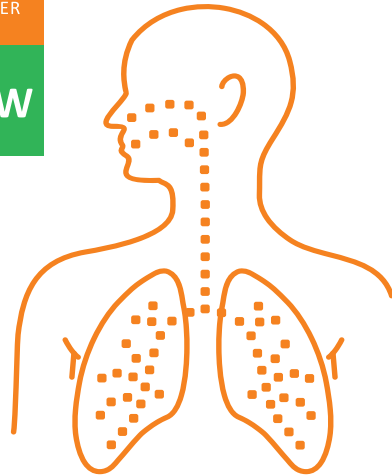
DRY SALT INHALER

100% NATURAL

**BRONCHIAL** DRY SALT INHALER  
LOWER RESPIRATORY CLEANSER

INCLUDES COMPLETE BRONCHIAL INHALER

**NEW**



reddot design award  
winner 2012

DEEP PENETRATING SALT CRYSTALS  
HELP TO ALLEVIATE

- CHEST CONGESTIONS
- ALLERGY DISCOMFORTS

**DRUG FREE – SAFE & EFFECTIVE**

CONTAINS: COMPLETE BRONCHIAL INHALER

**5 GRAMS OF NATURAL UNPROCESSED ROCK SALT CRYSTALS**

**HISTORY OF DRY SALT THERAPY** Since ancient times, rock salt has been used to ease the symptoms of respiratory ailments such as asthma, allergies, bronchitis, sinusitis and other respiratory discomforts. Salt mine and salt chamber therapy (also known as Halo Therapy) has been popular in Europe for many years. The Inhalo DSI Inhaler uses selected therapeutic grade minerals, in natural form, that are harvested from the famous Praid salt mine in Romania. This salt is sealed in a medical grade plastic casing and contains a one way safety valve that helps prevent salt contamination and trains the user to breathe correctly in order to provide the maximum therapeutic benefit.

## DSI BRONCHIAL PRODUCT FACTS

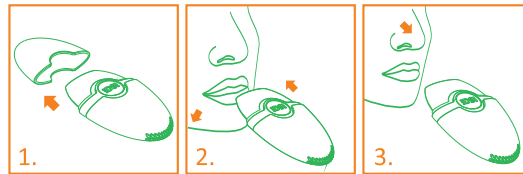
### Product Information

- Salt Cartridge contains 5 grams of Natural Unprocessed Rock Salt Crystals (Sodium Chloride, Magnesium and Calcium in different natural forms)  
Helps to alleviate: chest congestion, allergy discomforts and other symptoms which may be associated with certain lower respiratory conditions.

### Directions For use by adults and children over the age of 3 years old

#### For ORAL Inhalation (lower respiratory)

1. Remove cap from device
2. Inhale from the device with normal intensity.
3. After each inhalation, remove the inhaler, close your mouth and exhale through the nose. Nasal exhalation is required in order to sustain the therapeutic effect of the salt.



Use the inhaler in one continuous session for 15-20 minutes daily, or divide the use into three sessions lasting 7-10 minutes each. Use for 21 days continuously. Replace top cap after each use.

**Helpful Hint: Take a few sips of water prior to use. This will help to hydrate the lower respiratory tract and allow deep penetration.**

Regular use of INHALO Bronchial Dry Salt Inhaler promotes optimal bronchial hygiene and health, helping to alleviate lower respiratory discomforts.

### Warnings

- **Special Caution: Do not use inhaler in cases of severe pulmonary failure.**
- in case of acute diseases or high blood pressure, consult a physician before use
- shared use of this device is not recommended
- this product does not replace current medication and should be used in conjunction with medically prescribed therapies upon the advice of your physician
- wipe mouthpiece clean after each use
- do not allow saliva or other liquids to pass through or enter device
- do not shake or drop device, as this could cause salt crystals to break apart – it is important that salt crystals remain in the device to avoid any transitory irritation
- **CONTAINS SMALL PARTS. KEEP OUT OF REACH CHILDREN.** For children ages 3 and over requires adult supervision.

### Other information

- for reasons of hygiene replace the device 90 days after first use
- store at controlled room temperature of 15 to 30°C (59 to 86°F)
- see package for lot number
- **KEEP THIS CARD FOR FUTURE REFERENCE**

**Maintenance:** Periodically check for visible obstructions in the air holes located at the bottom of the device. To remove obstructions and to allow air to pass through the opening, you may have to dislodge clogged particles with a fine needle or pin. The exterior of the device may be cleaned with a damp clean soft cloth. The mouthpiece may be removed and rinsed with warm tap water. Dry thoroughly before replacing.

**Distributed by**  
**INHALO DSI HUNGARY KFT.**  
H-2030 ÉRD, VÍZÖNTŐ UTCA 4. • TEL.: +36 70 883 8088  
[www.inhalodsi.eu](http://www.inhalodsi.eu)

**CE** Patent Pending  
Made in Hungary, EU  
Class 1 Medical Device

Item No 00-200-01

Lot No

**B18PA1S1A01**

