

**RECHARGEABLE FM/AM/SW RADIO WITH MP3 PLAYER AND LED FLASHLIGHT**

**User manual**

**PLEASE READ THE MANUAL BEFORE YOUR FIRST USE.  
KEEP THIS MANUAL SAFE FOR FUTURE REFERENCE!**

**PRODUCT DESCRIPTION**



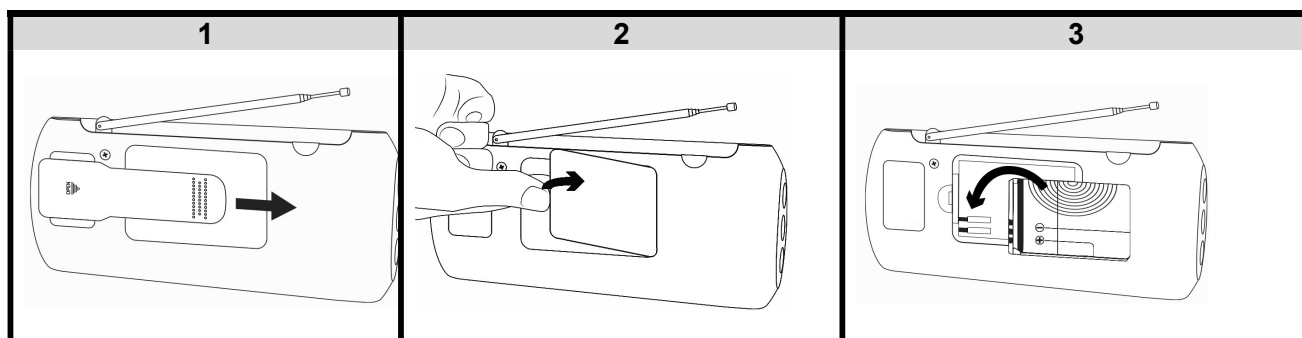
**Fig. 1**

- |   |  |
|---|--|
| <ul style="list-style-type: none"> <li>1. Speaker</li> <li>2. LED flashlight (3 built-in LEDs)</li> <li>3. Antenna</li> <li>4. LED display</li> <li>5. TF card slot</li> <li>6. LED flashlight switch</li> <li>7. BAND selection button : FM-AM-SW</li> <li>8. Earphone jack</li> <li>9. MODE button : « MP3 »</li> </ul> | <ul style="list-style-type: none"> <li>10. USB port</li> <li>11. Power ON/ OFF - Pause – Mute button</li> <li>12. Next MP3 / Radio station/ Fast forward</li> <li>13. DC 5V jack</li> <li>14. Previous MP3 / Radio station / Rewind</li> <li>15. V - = Decrease the volume</li> <li>16. V + = Increase the volume</li> <li>17. 0-9 number keys</li> <li>18. Battery compartment</li> </ul> |
|---|--|

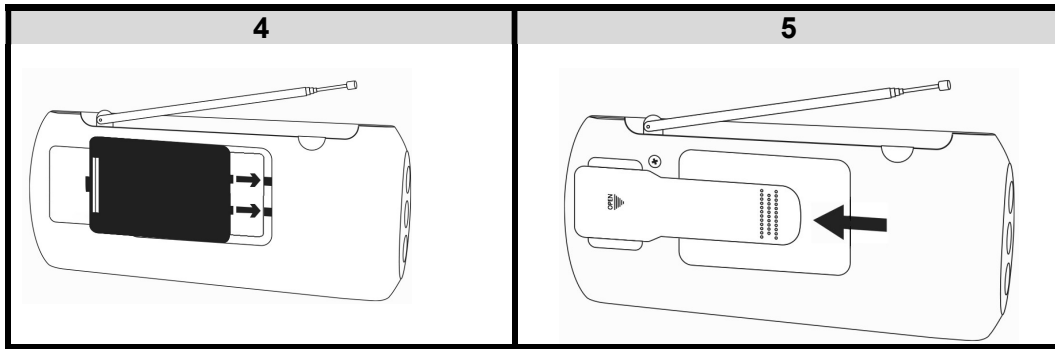
**TECHNICAL SPECIFICATIONS**

- Charging voltage: DC5V/ 500Ma
- Battery type: 1 x BL – 5C rechargeable lithium-ion battery, 600mAh, 3.7V<sup>---</sup> (included),
- Frequency bands: FM (88 – 108 MHz) – AM (522 - 1710MHz) – SW (5.8 – 16MHz)
- Audio format: MP3
- 3 built-in LEDS: 0.2W and 60lm for each LED

**BATTERY INSTALLATION**



Remove the black tab by pushing it toward the right.



## BATTERY CHARGING

- Plug the micro-USB end of the USB cable into the DC 5V jack of the radio. Connect the other end to the USB port of your computer or other charging device.
- After connection, the red coloured battery icon displays on the screen, indicating the radio is charging. Note: The icon always remains red from the beginning till the end of charging.  
*Charging time for full charge:* about 3-4 hours
- Unplug the USB cable when finished charging.

In case the battery is low, the red coloured battery icon flashes and the radio announces that it should be charged.


In order to ensure the life span of your radio, please recharge your radio when the sound is distorted or the volume is faint.

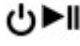


DO NOT use when charging !

## OPERATING INSTRUCTIONS

### 1. BASIC FUNCTIONS

**TO TURN ON** = Long press the button  till the display screen turns on: "HI" displays first, then the red battery icon and "bT" inscription, display. The radio announces that it is in Bluetooth mode.

**TO TURN OFF** = Long press the button  till the radio announces that it is powering off. Then it turns off.

**MODE BUTTON:** Press "MP3" button to toggle between the different modes as follows: "bT" (Bluetooth), "SD" (TF card), "USB" (USB key) and radio

Note: "SD" and "USB" will be shown in the sequence only if the storage media concerned is/ are connected. If none of them are, the sequence will be "bT" and radio.

### ADJUSTING THE VOLUME: V+ / V-

1. Press **V+** or **V-** to increase or decrease the volume level.
2. To increase or decrease progressively, press and hold **V+** or **V-**.

### 2. RADIO MODE

#### FM/ AM/ SW

1. After turning on the device, press "**BAND**" button to enter radio mode.
2. Press "**BAND**" repeatedly to choose the desired frequency band among the following: **FM**, **AM** or **SW**. *Note: The device announces the band frequency after each press on the button.*
3. Adjust the volume by pressing **V+** or **V-**.

## Scan setting for FM/ AM/ SW stations

In FM/ AM or SW mode:

Note: Before scanning, make sure to put the radio away from devices such as computers, lights, power charger, etc. The electromagnetic waves coming out from them can interfere with the radio's waves and may lead to a failure of radio stations' scanning, particular for AM frequency band.

1. After choosing your frequency band, press and hold "**BAND**" button to start scanning. When scanning, the radio will store the radio stations found during the scan and allot a number beginning with "**CH..**" to each of them for FM and SW frequencies bands. For instance: "**CH01**". For AM band, only the frequencies of the radio stations stored will be shown.

**DO NOT** press any button when scanning!

2. Once the scan is finished, the radio tunes to the displayed radio station frequency and starts broadcasting the current programme.
3. Completely pull out the telescopic antenna. Adjust its position and/ or alter the position of radio to achieve the best reception.
4. Press **▶▶|** or **|◀◀** to scroll through the numbers stored. **Important note:** Make sure to take note of your favourite radio station to access directly (see step 3 of section: "Listening to FM/AM/SW stations stored" below for direct access).

**The maximum of frequency radio station that the radio can memorize is 50 for FM and 20-30 for AM and SW. But, the total number of allotted numbers will actually depend on the place where you are located and number of radio stations your radio can receive on the very moment you do the scan.**

## Listening to FM/AM/ SW stations stored

In FM/ AM or SW mode:

1. Press **⏸▶▶|** to mute or resume the radio programme.
2. Press **▶▶|** or **|◀◀** to switch to the next or previous radio station stored.
3. To access directly to your favourite station, use the number keys from 0 to 9 to select your FM/ AM/ SW favourite station or scanned station. For example, if you want to get CH12 stored number, continuously press 1 and 2. If you want to select FM station band frequency 105.5, continuously press 1,0,5 and 5.  
For both procedures, the radio will switch to the selected radio station or stored station in about 4-5 seconds.

### **NOTE: Earphones (not included)**

- If you want to listen to the radio or MP3 files by earphones, insert them into the earphone jack.
- Ensure that the volume is not too loud before using your earphones.



**To avoid possible hearing damage, do not listen at high volume levels for long periods.**

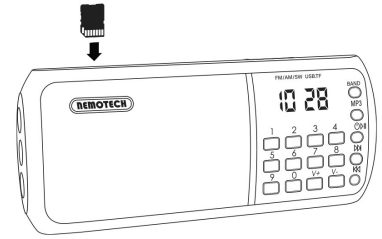
**Make sure to adjust the volume to a sound level that best fits your hearing sensitivity.**






## 3. MP3 FILE PLAYBACK (USB key/ TF card)

- Compatible audio files: MP3 only.
- Please insert a TF card into the « SD » slot.
- Maximum capacity of TF card and USB key (not included): 16GB
- The USB key or **TF** card should contain at least one MP3 audio file in order to be detected by the radio.

1. Insert your USB key or TF card, containing one or several MP3 files, correctly. “USB” or “SD” displays, and the radio announces the type of storage media inserted. MP3 files will play automatically 2-3 seconds later.

Note: If both storage media devices are both inserted, press “MP3” button to select either USB or TF card.



2. Press  to pause or resume listening.
3. Press  to play next file. Long press  to fast forward
4. Press  to play previous file. Long press  to rewind.
5. Select one specific MP3 file by using the keys numbered from 0 to 9 (for example, continuously press buttons 1 and 6 to select the 16th MP3 file. The playback starts 2-3 seconds later).

#### 4. Bluetooth function

1. After turning on the radio, “bT” displays and the radio announces that you are in Bluetooth mode.


Note: If the radio is already switched on and you are on another mode, press “MP3” button repeatedly till “bT” displays.

2. Turn on your phone or other device. Activate bluetooth in its setting menu. Find “NEMOTECH”. Pair your device with the radio to connect them.
3. Play your bluetooth device as you normally do. Music will be played from the radio.

#### NOTE:

- Make sure the distance between your bluetooth device and the unit is within 15 meters.
- Avoid having other bluetooth devices nearby interfering the signal and connection.

#### 5. LED FLASHLIGHT

1. To turn on, push the LED flashlight switch to  icon.
2. To turn off, push to “OFF” position.

### WARNINGS

- Do not use the device for anything other than its intended use.
- Keep it away from heat sources, direct sunlight, humidity, water or other liquids.
- Disconnect it from the USB connector after completion charge.
- Do not subject it to strong impacts and do not throw it.
- Do not operate it under high temperature.
- Do not drop, short-circuit, modify, disassemble or puncture it.
- Handle the product with care. A blow, a shock, or a fall, even from a low height, can damage it.
- In case of abnormalities (bulge, heat, etc.) during charging, disconnect the USB connector, stop using it and take it to a qualified technician.
- **All repairs should be done by a qualified technician.**
- It is not a toy. Keep out of reach of children.

## Safe instructions for battery

### ATTENTION

- Lithium-ion batteries can easily rupture, ignite, or explode when exposed to high temperatures, or direct sunlight.
- Do not disassemble or modify the battery. The battery contains safety and protection devices, which, if damaged, may cause the battery to generate heat, explode or ignite.
- The battery should not be removed until it is not completely discharged.
- The battery must be removed from the appliance before it is scrapped.
- The appliance must be disconnected from the mains supply when removing the battery.
- Do not plug the device after removing the battery.
- The battery must be disposed safely.
- **Batteries must not be disposed of with household waste but must be returned to battery collection points.**

To remove the battery, follow the procedure in part « Battery installation», step 1 and 3 then remove the battery.

## **CLEANING AND MAINTENANCE**

- **DO NOT IMMERSE IN WATER OR ANY OTHER LIQUID.**
- **DO NOT USE ABRASIVES OR CLEANERS.**

- Clean with a dry and lint-free cloth.

**WARNING: You should not dispose of this device with your household waste. A selective collection system for this type of product is implemented by your local authorities. Please contact your local authorities to find out how and where collection takes place. These restrictions apply because electrical and electronic devices contain dangerous substances that have harmful effects on the environment or on human health and must be recycled.**

This symbol indicates that electrical and electronic devices are collected selectively. The symbol shows a waste container crossed out with an X symbol.

Imported by EML – trading name Prodis, 1 rue de Rome 93110 Rosny-sous-Bois-France/ Made in PRC

Marketed by EUROTUPS VERSAND GMBH D-40764 LANGENFELD, Germany