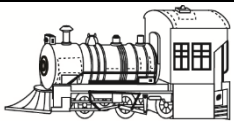






ELECTRIC CHRISTMAS TRAIN INSTRUCTION MANUAL

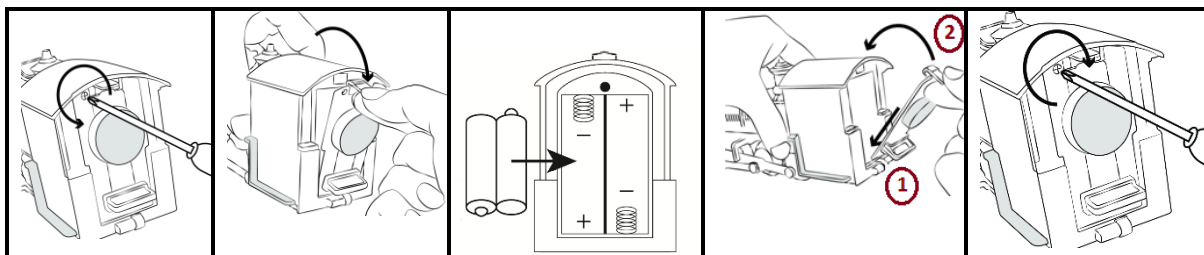
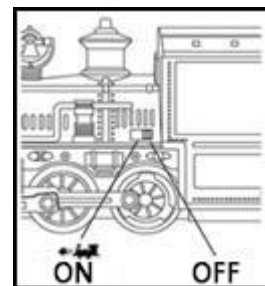
- Please read the Operating instructions carefully before handling the little LED-light-emitting train.
- Please keep carefully the instruction manual for future reference.
- When you submit this article to third parties, give him the present instruction manual.

A. PRODUCT DESCRIPTION

				
Locomotive (x1)	Carriage A (x1)	Carriage B (x1)	Carriage C (x1)	Tracks (x8)

B. BATTERY INSTALLATION

Before inserting batteries, insure that the train is off (reset the switch to the OFF position).



Unscrew the screw which is to the back on the locomotive on the battery compartment cover.

Then, press black tab to remove the cover

Insert 2 batteries AA/ LR06 as indicated inside the battery box.

Reset the cover as indicated on the above drawing.

Screw the battery cover back into place. And be sure that the screw has been properly tightened.

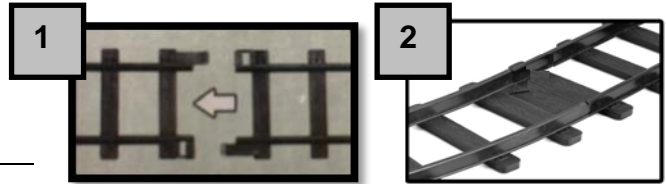
C. CIRCUIT SETUP

- Before proceeding to the setting up tracks, be sure that the floor surface is perfectly flat. The circuit board must be placed on a clean stable flat surface, dust-free and non-fibrous (ex. carpet fibers) so that the train can easily run straight through.
- If you mount the circuit on a table, be sure that the tracks are not close to the edge of this table. Because the cars could derail and fall in the empty space.



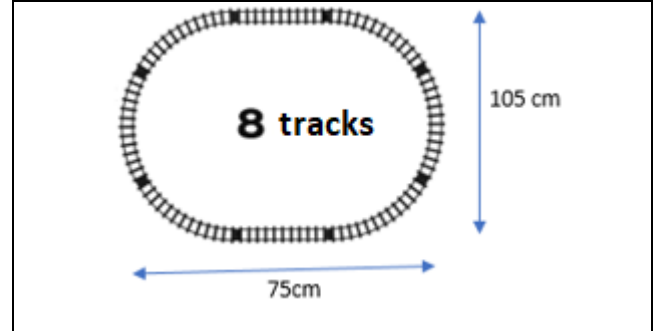
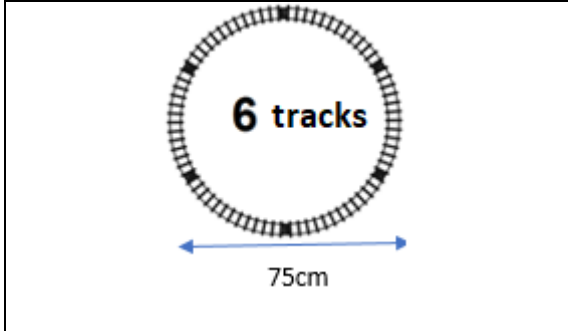
1. Tracks layout setting up

In order to snap, proceed as indicated hereunder



DO NOT bend or damage the slots or the rails tabs.

2. Two options of forms of circuit



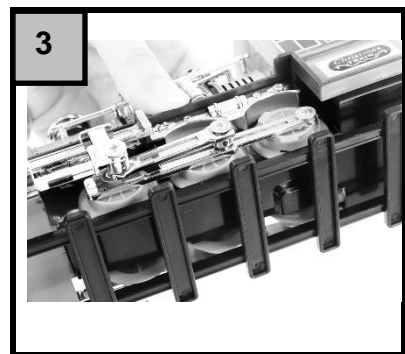
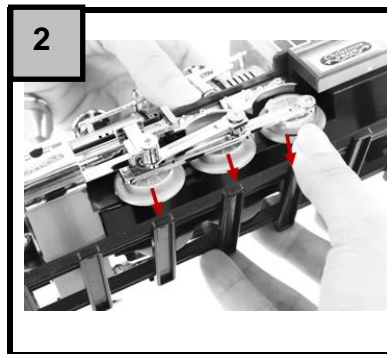
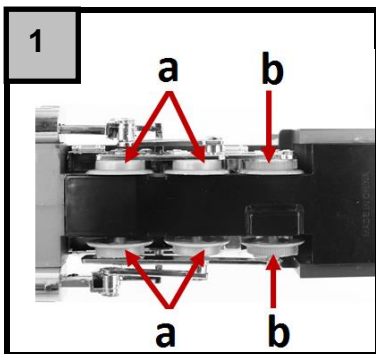
Note: To obtain this form, do not use

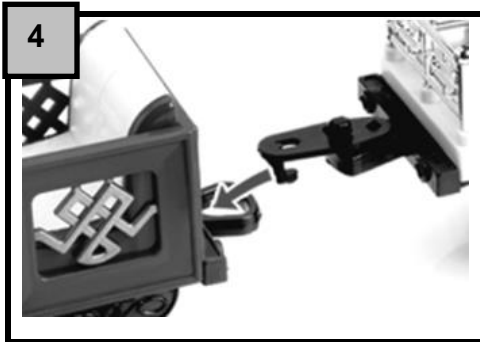
the below tracks:

D. LOCOMOTIVE AND CARS SET UP ON THE RAILS/ START UP OF THE TRAIN

Before the train starts, be sure that the wheels are correctly positioned on the rails. The smooth **(a)** and toothed **(b)** edges on the front part of the wheels must be set on the rails (see photos of the steps 1 and 2). The contact of those parts to the train will facilitate the small train to start and turn around several times till its manual shutdown of it (position on "OFF").

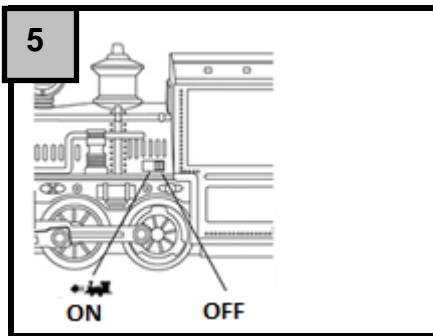
Note: When the train stops during the lap of the circuit, please reposition the wheels on the rails properly.





After carefully positioning the wheels please connect the locomotive and the cars together care being taken not to shift the wheels out of the rails.

Note: The wheels must always be properly positioned on the rails.



Turn the power switch on position on (ON).

E. WARNING ON BATTERIES

- Please remove the batteries of the small train if you plan not to use it during a long period.
- Never mix alkaline, standard (carbon-zinc) and rechargeable (nickel hydride).
- Don't mix new and used batteries.
- Don't attempt to recharge non rechargeable batteries.
- Remove rechargeable batteries from the device (if possible) before charging them.
- Rechargeable batteries must always be recharged under adult supervision.
- Remove used batteries.
- Never short the power supply terminals.
- Always use the recommended or equivalent battery types.
- Always pay attention to battery polarity.

F. CARE AND MAINTENANCE

- Do not use any aggressive cleaning agents (solvents, abrasive cleaning agents...).
- Clean the train, its wheels and the lines regularly using a soft slightly damp cloth.
- Do not expose to direct sunlight or other sources of heat, to dust and humidity.
- Do not expose to strong levels of vibration or severe knocking on hard surfaces.
- Stock the train in a dry location.
- Do not make any repair attempts to the train in case of any malfunctioning. Please contact your local service dealer for any repairs.

WARNING: You should not dispose of this device with your household waste.

A selective collection system for this type of product is implemented by your local authorities. Please contact your local authorities to find out how and where collection takes place. These restrictions apply because electrical and electronic devices contain dangerous substances that have harmful effects on the environment or on human health and must be recycled.

This symbol indicates that electrical and electronic devices are collected selectively. The symbol shows a waste container crossed out with an X symbol.

**Imported by EML/ Prodis 1 rue de Rome 93110 Rosny-sous-Bois-France/ Made in PRC
Marketed by EUROTUPS VERSAND GMBH D-40764 LANGENFELD**

