

SHOULDER BAG ORGANISER WITH LED STRIP

A. SAFETY BAG FEATURES

This robust shoulder bag is made out of ballistic nylon and combines four safety features:

1. A flashing LED strip to ensure that cars can see you in the dark.
2. A slash-resistant shoulder strap reinforced with a steel cable to prevent snatch-and-grab thefts.
3. An autonomous safety alarm (130 dB) with pull pin integrated into the shoulder strap.
4. RFID-blocking interior compartments to prevent RFID skimming.

B. DESCRIPTION OF THE SAFETY BAG ALARM

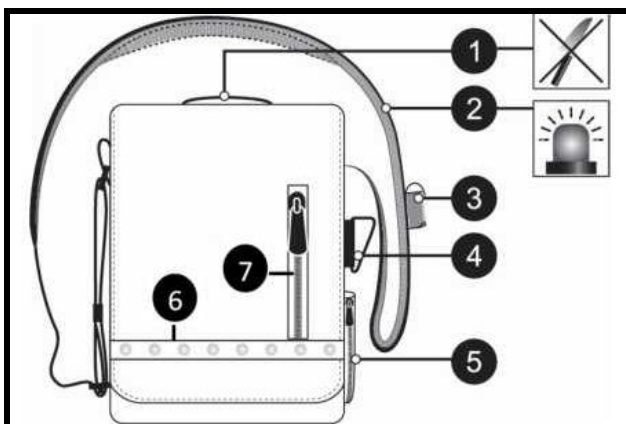


Figure 1 Front view

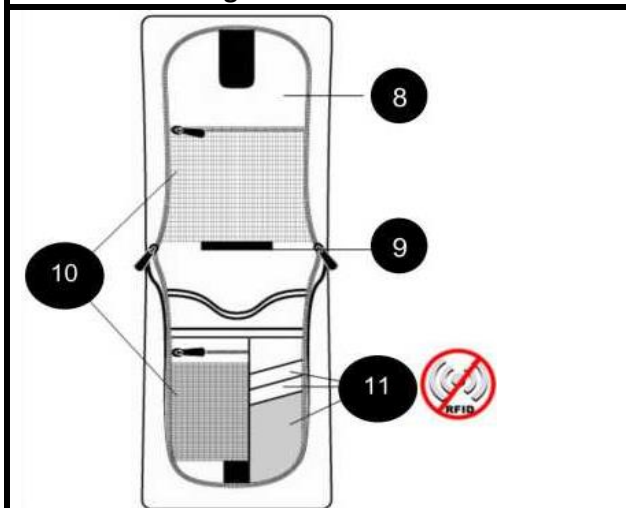
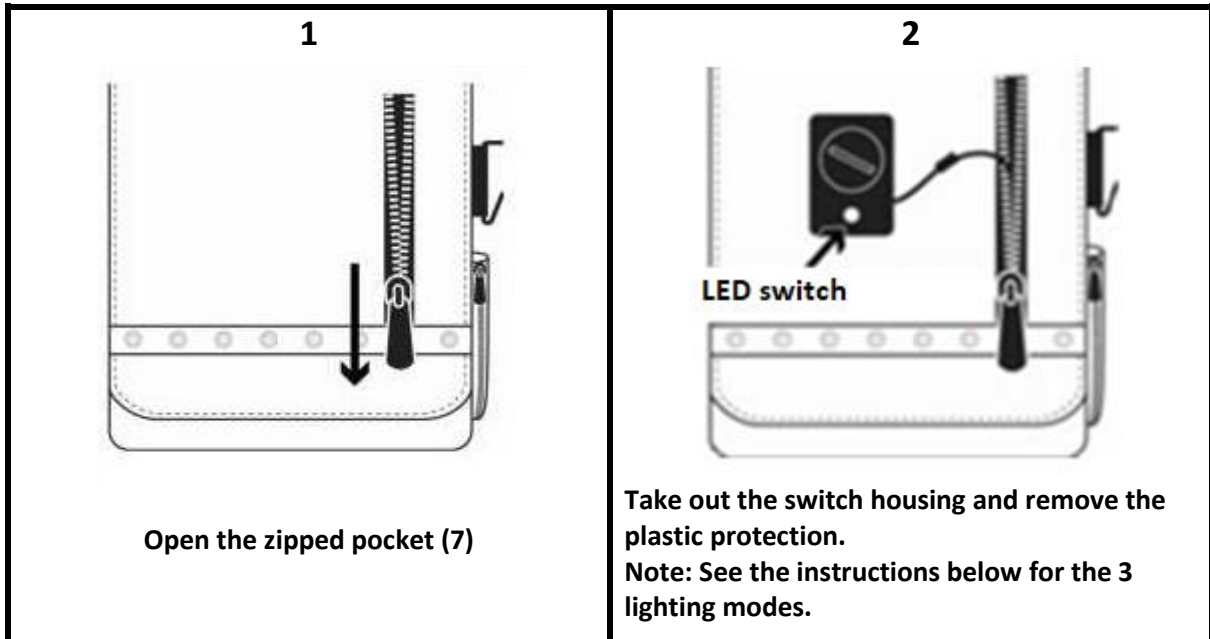


Figure 2 - Inside of the bag

1. Bag handle
2. Slash-resistant shoulder strap
3. Pocket containing the safety alarm
4. Carabiner
5. Exterior pocket
6. LED strip with 3 lighting modes
7. Zipped pocket containing the switch for turning on the LED strip
8. Flap with double fastener (zip / hook and loop)
9. One small pen compartment
10. Two zipped RFID-blocking pockets
11. Three credit card compartments

C. LED STRIP

a. Location of LED switch

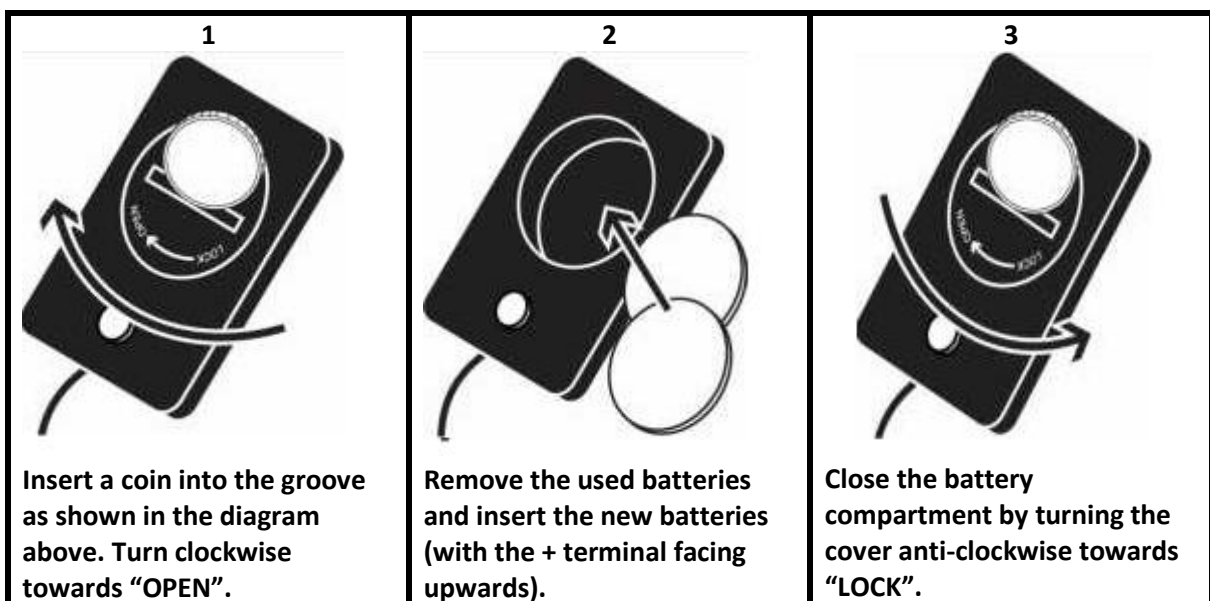


b. How to turn on the LED strip

1. Press the button on the switch firmly to turn on the LEDs.
2. Press firmly again to set the LEDs to fast flashing mode.
3. Press firmly a third time to set the LEDs to slow flashing mode.
4. Press firmly a fourth time to turn off the LEDs.

D. HOW TO CHANGE THE LED STRIP BATTERIES.

Batteries required: two CR2025 batteries (included)



E. DESCRIPTION OF THE SAFETY ALARM

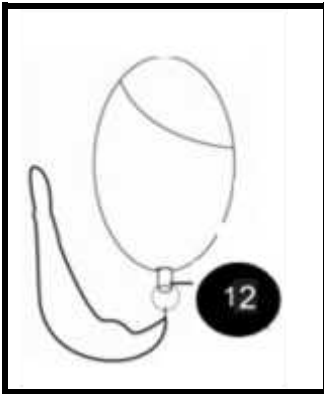


Figure 3 - Safety alarm

12. Cord connected to the pull pin for activating the alarm

Batteries required for the safety alarm: 1 x 23 A, 12 V battery

How to change the battery:

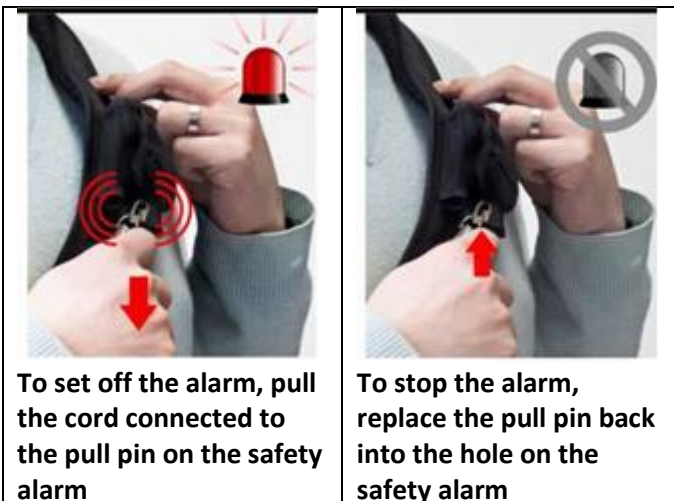
1. Unscrew the screws at the back of the safety alarm to remove the battery compartment cover.
2. Remove the used 23 A battery and insert a new battery making sure to respect the (+) and (-) polarity.
3. Before closing the battery compartment, make sure to place the slot on the side where the pull pin is located.

Note: When placing the alarm in the pocket (3), the pull pin cord must be facing downwards and passed through the hole in the pocket.

F. HOW TO SET OFF OR TURN OFF THE ALARM



ANTI-THEFT
ALARM



To set off the alarm, pull the cord connected to the pull pin on the safety alarm

To stop the alarm, replace the pull pin back into the hole on the safety alarm

WARNING: You should not dispose of this device with your household waste. A selective collection system for this type of product is implemented by your local authorities. Please contact your local authorities to find out how and where collection takes place. These restrictions apply because electrical and electronic devices contain dangerous substances that have harmful effects on the environment or on human health and must be recycled.



This symbol indicates that electrical and electronic devices are collected selectively. The symbol shows a waste container crossed out with an X symbol.



Imported by EML/ Prodis, 1 rue de Rome, 93110 Rosny-sous-Bois, France
Marketed by EUROTUPS VERSAND GMBH D-40764 LANGENFELD, Germany
Made in PRC