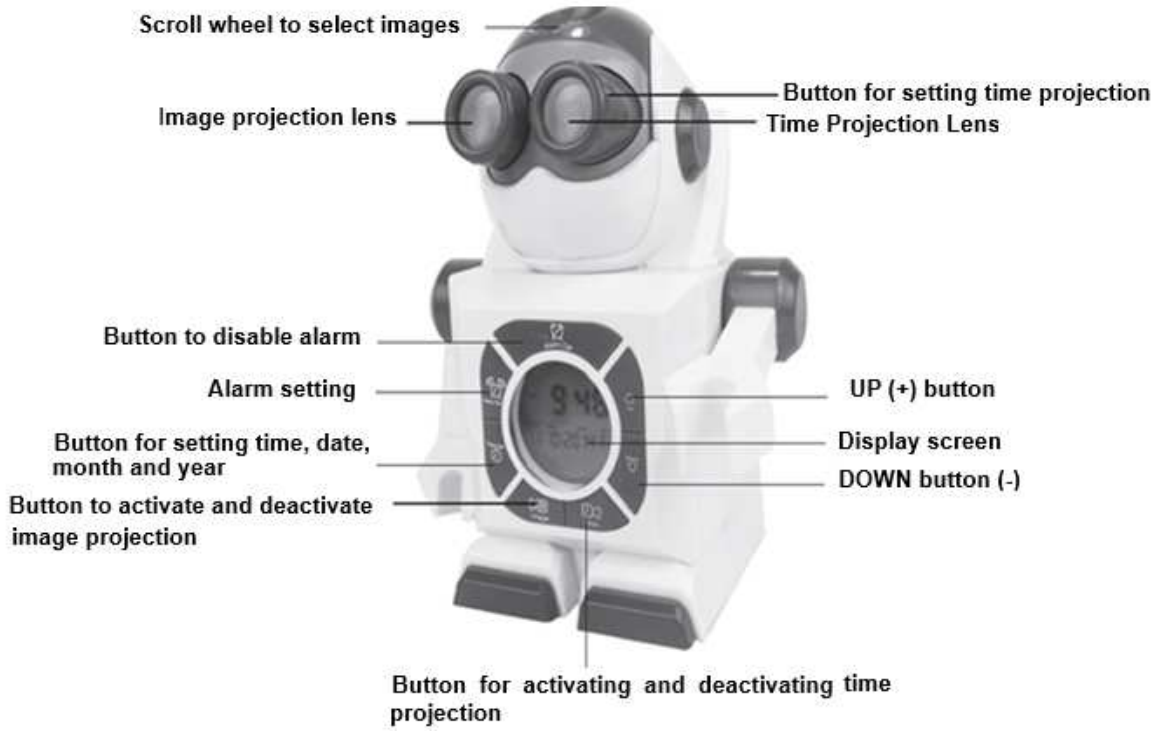


# INSTRUCTION MANUAL

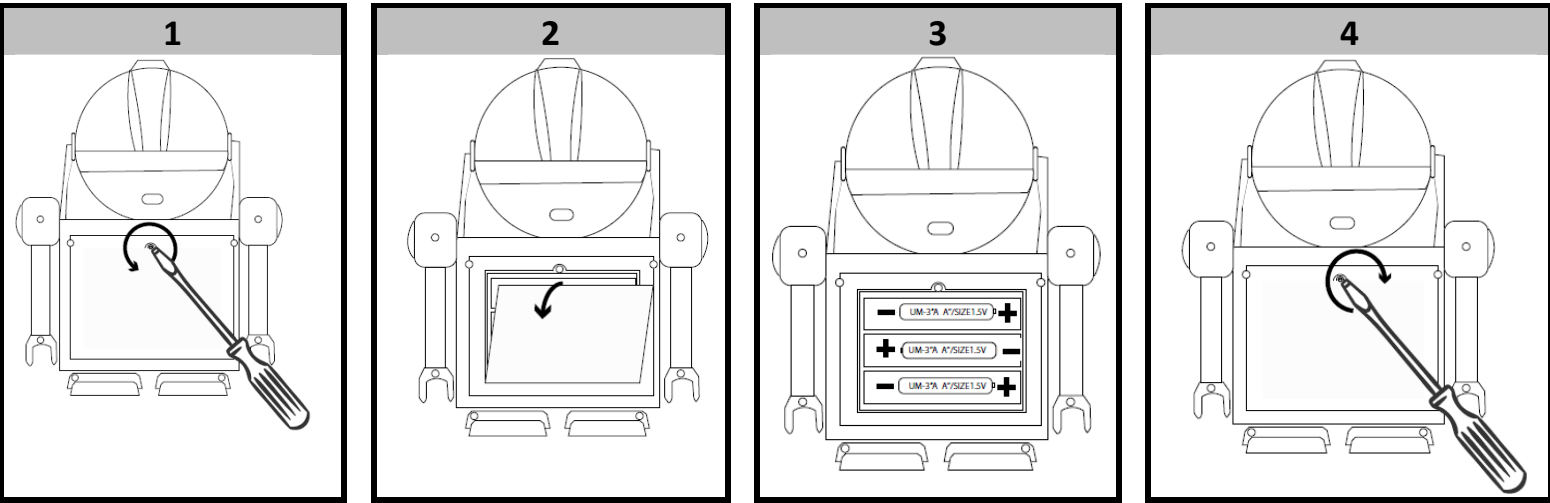
## PRODUCT DESCRIPTION



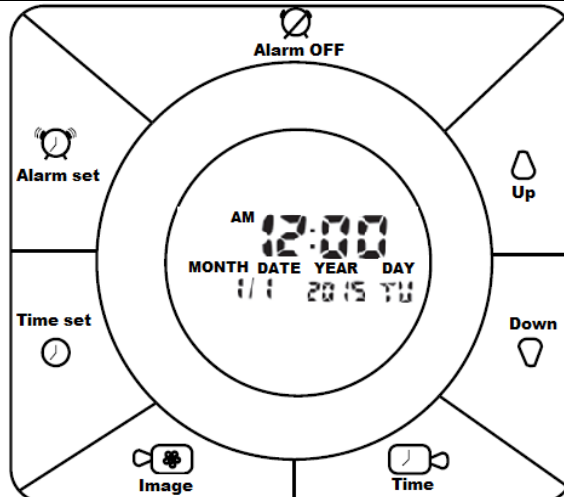
## BATTERY INSTALLATION

Batteries required: 3 x 1.5V AA or LR06 (not included).

NOTE: It can also be powered by a certified DC5V, 500mA DC power adapter (not supplied).



## SETTING OPERATIONS



## DATE SETTING

1. Press "TIME SET" button for 2 seconds, you will hear a beep.
2. The month digit starts blinking. Press "UP" or "DOWN" button to set the month.
3. Press "TIME SET" button again to confirm month setting and switch to date setting.
4. Repeat steps 2 and 3 to set the date and year. After setting the year, the clock switch to time setting.

## HOUR SETTING

Repeat steps 2 and 3 of section A. Date setting to set the hours and minutes.



### **NOTE:**

- The display is by default 12H. The indicators are either AM (morning) or PM (afternoon).
- To select 12H or 24H, press UP button. The AM / PM indicators correspond to 12H format, the absence of indicators to 24H format.

## ALARM SETTING

1. Press "ALARM SET" button to enter alarm setting mode.
2. Press ALARM SET button again for 2 seconds, you will hear a beep. The hour digit starts blinking.
3. Press "UP" or "DOWN" button to set alarm time.
4. Press "ALARM SET" button to confirm the alarm time setting and switch to the minute setting.
5. Repeat steps 3 and 4 for the minute setting operation.

## ACTIVATION OU DÉSACTIVATION DE L'ALARME

- Press "ALARM SET" button.
- Press "UP" button to activate the alarm. The alarm icon  displays.
- Press "UP" again to disable.  disappears.

## DISPLAY OF TIME PROJECTION/ IMAGE PROJECTION

- Press "TIME" button to turn on projection time.
- Press "TIME" again to turn it off.
- Press "IMAGE" button to turn on image projection.
- Press the scroll wheel to select between 4 programmed pictures.
- Press "IMAGE" again to turn it off.

## WARNING ON BATTERIES

- Never mix alkaline, standard (carbon-zinc) and rechargeable (nickel hydride).
- Don't mix new and used batteries.
- Don't attempt to recharge non-rechargeable batteries.
- Remove rechargeable batteries from the device (if possible) before charging them.
- Rechargeable batteries must always be recharged under adult supervision.
- Remove used batteries.
- Never short the power supply terminals.
- Always use the recommended or equivalent battery types.
- Always pay attention to battery polarity.

**WARNING: You should not dispose of this device with your household waste. A selective collection system for this type of product is implemented by your local authorities. Please contact your local authorities to find out how and where collection takes place.**

**These restrictions apply because electrical and electronic devices contain dangerous substances that have harmful effects on the environment or on human health and must be recycled.**

**This symbol indicates that electrical and electronic devices are collected selectively. The symbol shows a waste container crossed out with an X symbol.**

