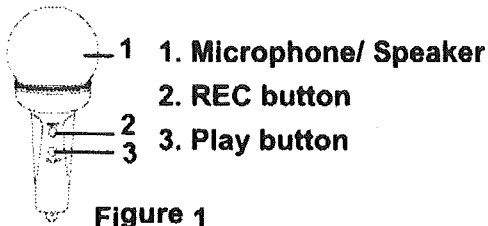


M661/ WK-305 MICROPHONE RECORDER KEYCHAIN

DESCRIPTION OF PRODUCT



OPERATIONS FOR USE

1. To record, press "REC" button and keep holding it.
2. To stop recording, just release "REC" button.
3. To listen to the recorded message, press "PLAY" button.

Note: In order to delete a message, you have 2 options:

- 1) Press REC button once, and the message will be deleted immediately;
- 2) Record another message and the last message will be deleted.

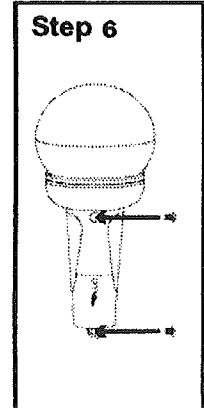
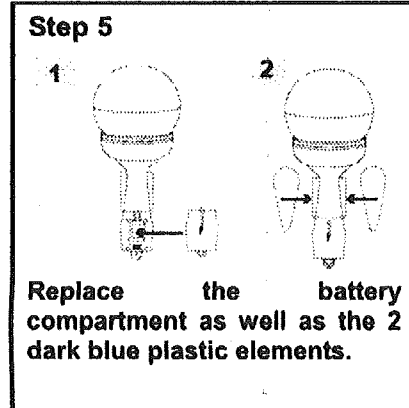
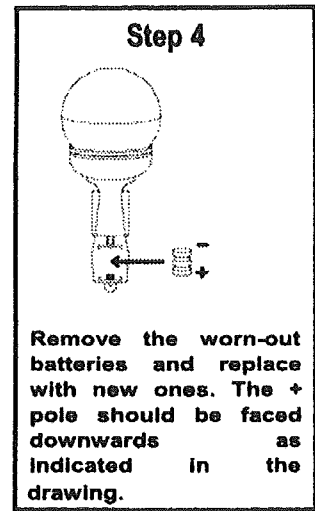
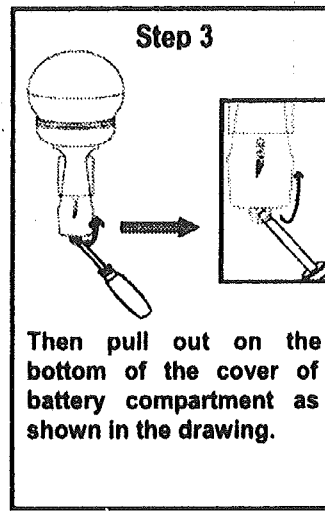
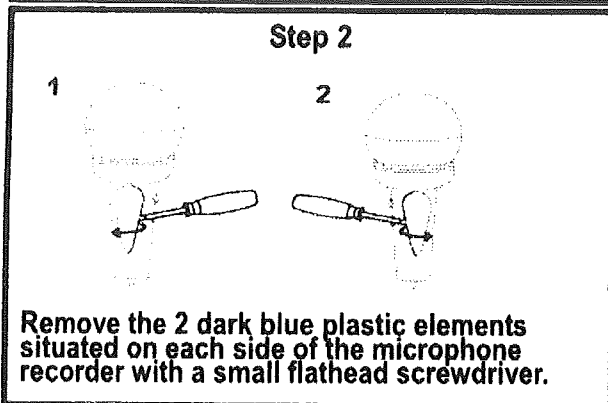
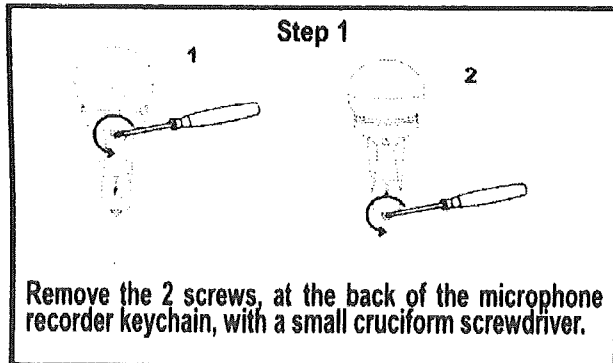
Max message: 1 message lasting 7 seconds (a beep indicates the end of recording).

Max. recording time: 7 seconds

Please note that the best distance to place the microphone recorder from the mouth is about 6 cms.

BATTERY INSTALLATION

Power: 3 x AG-13 (battery included)



Do not immerse in water or other liquids.

IV. WARNING ON BATTERIES

- Never mix alkaline, standard (carbon-zinc) and rechargeable (nickel hydride).
- Don't mix new and used batteries.
- Don't attempt to recharge non rechargeable batteries.
- Remove rechargeable batteries from the device (if possible) before charging them.
- Rechargeable batteries must always be recharged under adult supervision.
- Remove used batteries.
- Never short the power supply terminals.
- Always use the recommended or equivalent battery types.
- Always pay attention to battery polarity.



WARNING: You should not dispose of this device with your household waste. A selective collection system for this type of product is implemented by your local authorities. Please contact your local authorities to find out how and where collection takes place. These restrictions apply because electrical and electronic devices contain dangerous substances that have harmful effects on the environment or on human health and must be recycled. This symbol indicates that electrical and electronic devices are collected selectively. The symbol shows a waste container crossed out with an X symbol.

Marketed by EUROTOPS

LANGENFELD GMBH D-40764 LANGENFELD